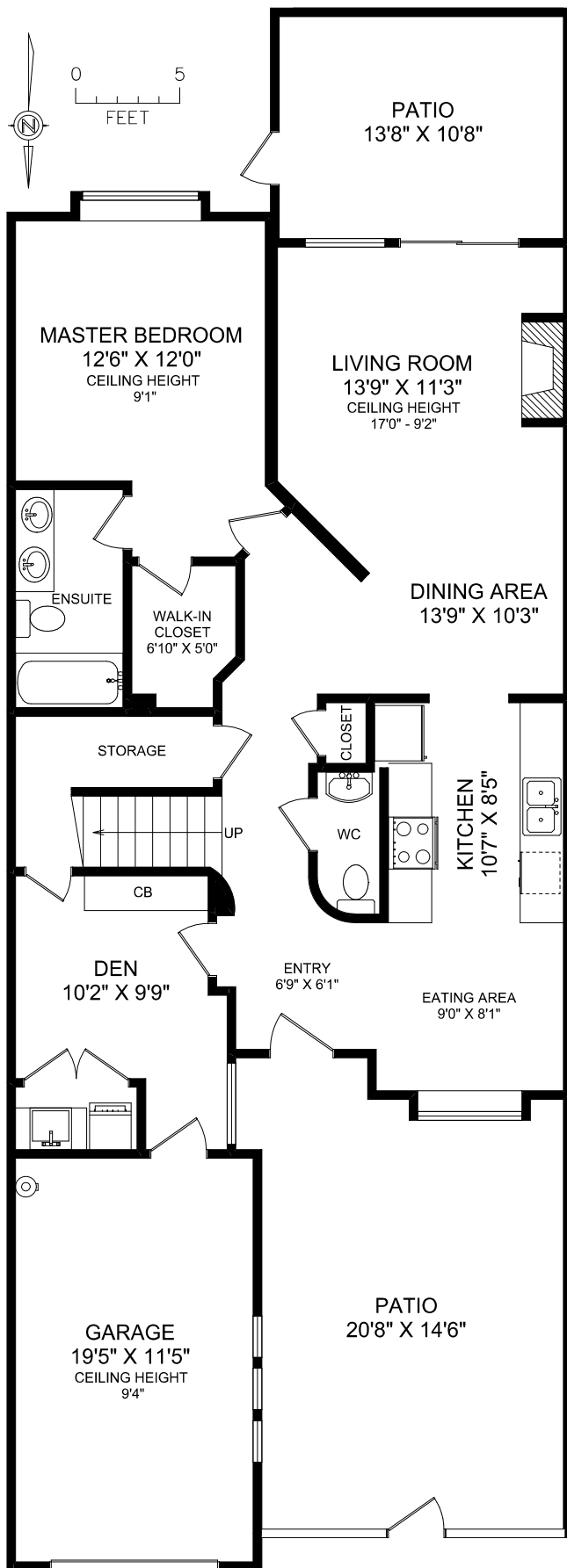
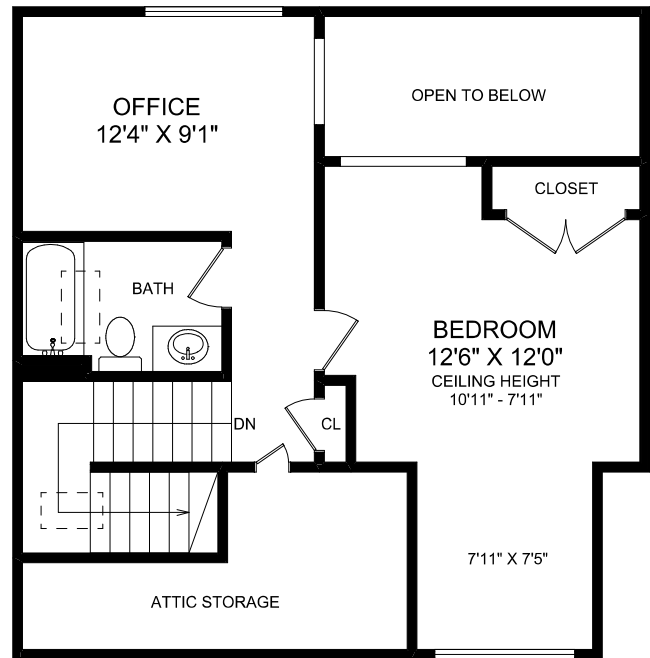


## MAIN FLOOR



## UPPER FLOOR



AREA	SQ FT		
FLOOR	FINISHED	UNFINISHED	TOTAL
MAIN	1172	0	1172
UPPER	531	113	644
TOTAL	1703	113	1816
GARAGE		235	
PATIOS		481	



**CHRISTIE'S**  
INTERNATIONAL REAL ESTATE

**13-10520 MCDONALD PARK DRIVE**

DOCUMENT PREPARED FOR THE EXCLUSIVE USE OF  
**KIMBERLY LEGEARD**

MEASURED SEPTEMBER 17TH, 2015 BY AMANDA HOY



250.388.6998 orders@realfoto.ca

All information furnished regarding this property is from sources deemed reliable but no warranty or representation is made to the accuracy thereof.